



Since 1951[®]

Sabilex[®]

Flexible Partials

AESTHETIC AND FUNCTIONAL METAL FREE DENTURES



EXCLUSIVE MATERIALS LINEUP:





Aesthetic
Translucent, imperceptible and finely natural.



Comfortable
Light weight and exceptional fit, occlusal support.



Reliable
They last for years when properly used.



Hypoallergenic
Monomer free, they do not produce allergic reactions.

Sabilex Materials and Cartridges

Sabilex offers an integral aesthetic solution where health and comfort join for your benefit. Find a variety of materials that guarantee a wide range of applications. High technology materials for the making of metal free dentures. Materials approved by: FDA and CE.



- Copolymer
- For flexible partials
- Unbreakable
- Does not absorb moisture
- Due to its high fluency it can be used with any injection machine

Colors

Cristal FF 100	Translucent pink 110	Intense pink 112
Extra intense pink 114	Pink 120	Ethnic brown 180

230°C / 15 min



- Thermoplastic Polyolefin
- It is produced through a molecular orientation process, achieving greater shine and surface hardness
- For flexible partials
- Easy to adjust, finish and polish
- Long lasting
- Unbreakable
- Does not absorb moisture

Colors

Pink 238	Pink 245
----------	----------

240°C / 15 min



- Its low flexibility achieves more resistance and stiffness
- For the making of total and partial dentures
- Easy to adjust, finish and polish
- High shine
- Long lasting
- Dense and smooth surface

Colors

Cristal FU 10	Pink 21	Pink 35
Pink 78	Pink 20	

280°C / 15 min



- Injectable translucent monomer free acrylic
- Low flexibility
- Ten times more resistant than conventional acrylics
- For full and partial dentures
- Can be repaired and relined with acrylics
- Thinner dentures than conventional acrylic
- Quick and easy to finish and polish
- Monomer free
- Allows characterization of gums with resins

Colors

Cristal AF0	Pink AF2	Pink AF4	AF 9 solid
-------------	----------	----------	------------

280°C / 25 min

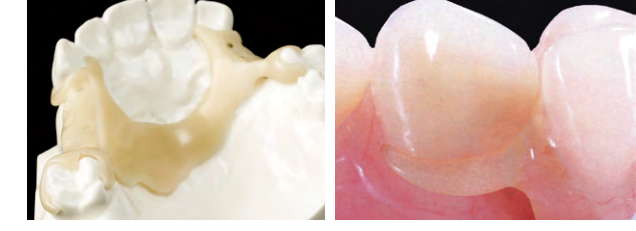


- Its high fluency allows for complex design
- Great and easy solution for the making of clasps, frameworks and more
- It can be combined with acrylic partials and chomes
- Monomer free
- SNAP FIT: FlexiAcetal bends and returns to its original shape achieving a comfortable and secure fit

Colors

W1	W2	A1	A2
A3,5	A4	B3	C2
C3	D3	Pink 2	

220°C / 20 min



- Top performance semi-crystalline polymer made with PEEK
- For the making of frameworks, crowns, bridges, attachments and telescopic structures
- It can be veneered with traditional veneer composites
- It is a very comfortable material due to its bone-like properties and low weight

2 types

Biostrong P (standard).
E-modulus: 3600 MPa
Flexural strength: 168 MPa
Cream

Biostrong CF (Ceramic Filled).
Ceramic fillings optimize its mechanical characteristics. Excellent polishing and adhesion qualities with veneer resins.
White

380°C / 20 min



Microinjection Machines

Fully automatic

Works with cartridges

Ø 25 mm (upon request availability for Ø 22 and 28 mm)

Air pressure

Recommended 7 kg / cm²

Integrated heating unit.

Allows to inject thermoplastic materials that require high temperatures up to 400°C. Use this system to inject PEEK resin.

Soft touch buttons

Each machine includes:

- 1 flask
- 1 release compound
- 1 brush
- Cartridges
- Instructions manual
- Brochures



2AD-400C

Flask cover (optional)

Pneumatic Injection force 630 kgs

Digital display

Allows clear observation of automatic injection process. Easy programming of: injection temperature, heating and injection time.

Sound alarm indicator

220V (optional 110V)

Excellent quality/cost relationship.

Has proven to be the most popular model sold worldwide.



Compact models

- Injection force: 630 kgs
- Measures: 52 x 17 x 22 cm
- Weight: 8.5 kg

300°C

Super Power models

- Injection force: 1000 kgs
- Measures: 57 x 20 x 28 cm
- Weight: 20 kg

Max injection temperature 400°C

Manual model

- Measures: 35x10x15cm
- Weight: 4.5 kg

300°C



2AD

- Heat up to 300 °C
- Digital display
- 1 program



2AD-400

- Heat up to 400 °C
- Digital display
- 1 program



2AD-400C

- Heat up to 400 °C
- Digital display
- 1 program
- Flask cover



2AD-400 PLUS

- Heat up to 400 °C
- LCD display: * 1
- Stores 5 programs
- Flask cover



BIOSTRONG 400

- Extra power
- Injection force: 1000 Kg *2
- Heat up to 400 °C
- Digital display
- 1 program
- Flask cover



BIOSTRONG 400 PLUS

- LCD display
- Stores 5 programs
- Heat up to 400 °C
- Extra power
- Flask cover



POWER 300

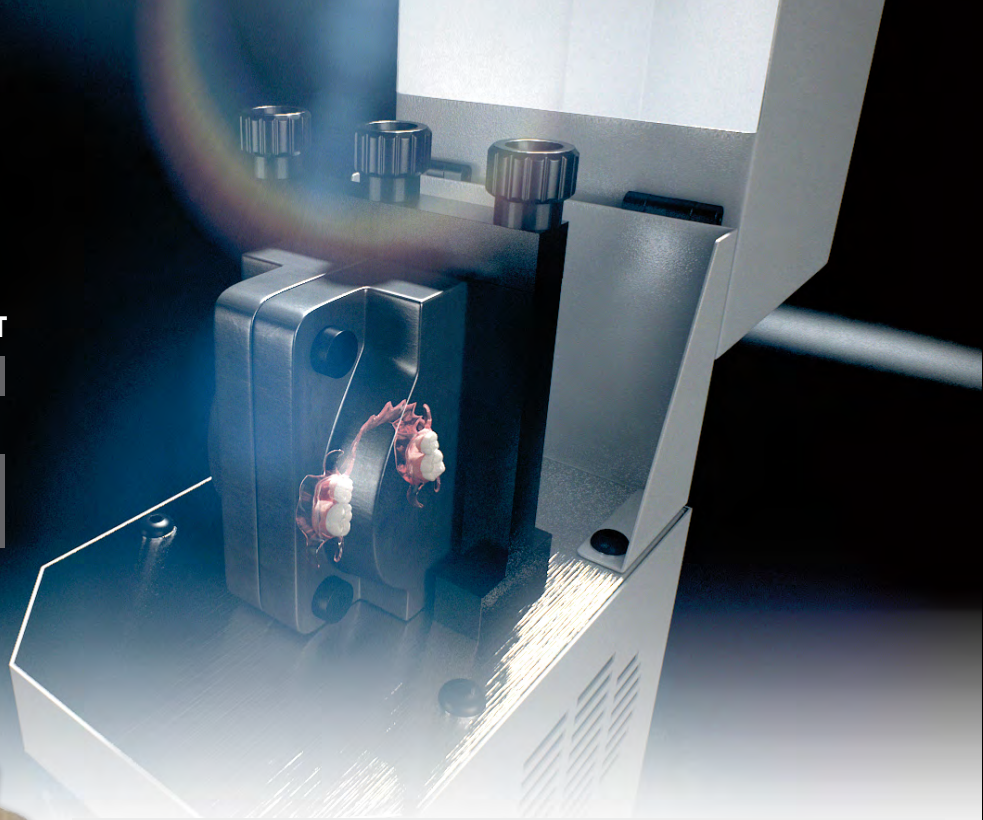
- Heat up to 300 °C
- Integrated heating unit.
- Controlled by thermostat
- Screw injection system
- Affordable

*1 LCD display allows clear observation of automatic injection process state, temperature and time settings. Stores information of time and temperature to inject 5 different materials.

*2 Its greater injection force offers optimum results and maximum precision. Operator can make high density denture surfaces with this system.

SABILEX CARTRIDGE INFORMATION CHART

Ø mm	Sizes (height in mm)	To make
22	Medium: 70 Large: 90	Partial Dentures Full Dentures
25	Small: 45 Medium: 70 Large: 90 XL: 100	Unilaterals Partial Dentures Full Dentures Full Dentures
28	Medium: 70 Large: 90 XL: 100	Partial Dentures Full Dentures Full Dentures



- Ready to use
- Humidity free process
- Exclusive "recover" system
- Low resistance operation
- Individually vacuum sealed in aluminum foil, ready to inject
- 5 Highly versatile multi property materials
- 23 Color shades
- Individually packaged colored box according to CE directives
- 100% Efficient and reliable



ACCESSORIES



Polimagic. Polishing abrasive powder. Works better than pumice.



High temperature lubricant



Microtorch



Standard Flask



Flask for Unilaterals



Denture polishing and finishing accessories

See the Product Line:
Sabilex vacuum forming machine and sheets
P90

Perfect results!

Modern design

- Compact and lightweight : 4 kg
- Dimensions: 23 x 30 x 16 cm
- Vacuum sealed sheets

Applications:

- Mouthguard
- Bite plate (bruxism)
- whitening sheets and more

