

The logo consists of the letters 'CADAF' in a bold, rounded, sans-serif font. The letters are a vibrant green color. A white, curved line runs through the middle of the letters, creating a sense of movement and depth. Below the letters, there is a dark green shadow that mirrors the shape of the letters, giving the logo a three-dimensional appearance.

**CADAF**

compañía argentina de  
alfalfas y forrajes s.a.

# Table of Content

● **About Us**

● **Logistics**

● **Our Plant**

● **Exports**

● **Clients**

● **Our compromise**

● **Our contact**

● **Strategic agreements**

# ABOUT US

CADAF is placed in San Francisco, Córdoba, the center of the best area in Argentina for the alfalfa and forage crop, with more than 1.2 million hectares of cultivation. This strategic placement empower us to make stronger bonds with the agriculture producers and also reduce time and transportation costs. We are currently the top buyer and exporter of this kind of forage on this area.

This is the first of six multimodal nodes that will be developed in the surrounding area within a few years.



# LOGISTICS

The plant is located at the San Francisco Railroad station on the Belgrano Cargas line which whom we have a contract for 20 years.

We are the only plant in the Argentine Republic with direct access to ports by means of the railway reducing hydrocarbons combustion because of the number of movilized vehicles. This also enable us to be very efficient and predictable in logistics, reducing time and costs.

We also have special agreements with national ports that guarantees the best market price, permanent contracts and direct commercialization.



# OUR PLANT

Due to our latest technology, within a short time we are able to produce high density alfalfa bales of different sizes and weights to standardize and improve our shipment around the world.

The structure of our warehouse is specially designed to stabilize the product benefiting from control air flow and guaranteeing an international quality product without hydrocarbon burning.

Capacity: 60.000 tons/year (one shift)  
8500 tons of warehousing (5700 m<sup>2</sup>)





# EXPORTS



# CLIENTS

- **KUWAIT**
- **SAUDI ARABIA**
- **BAHRAIN**
- **QATAR**
- **UNITED ARAB EMIRATES**
- **OMAN**

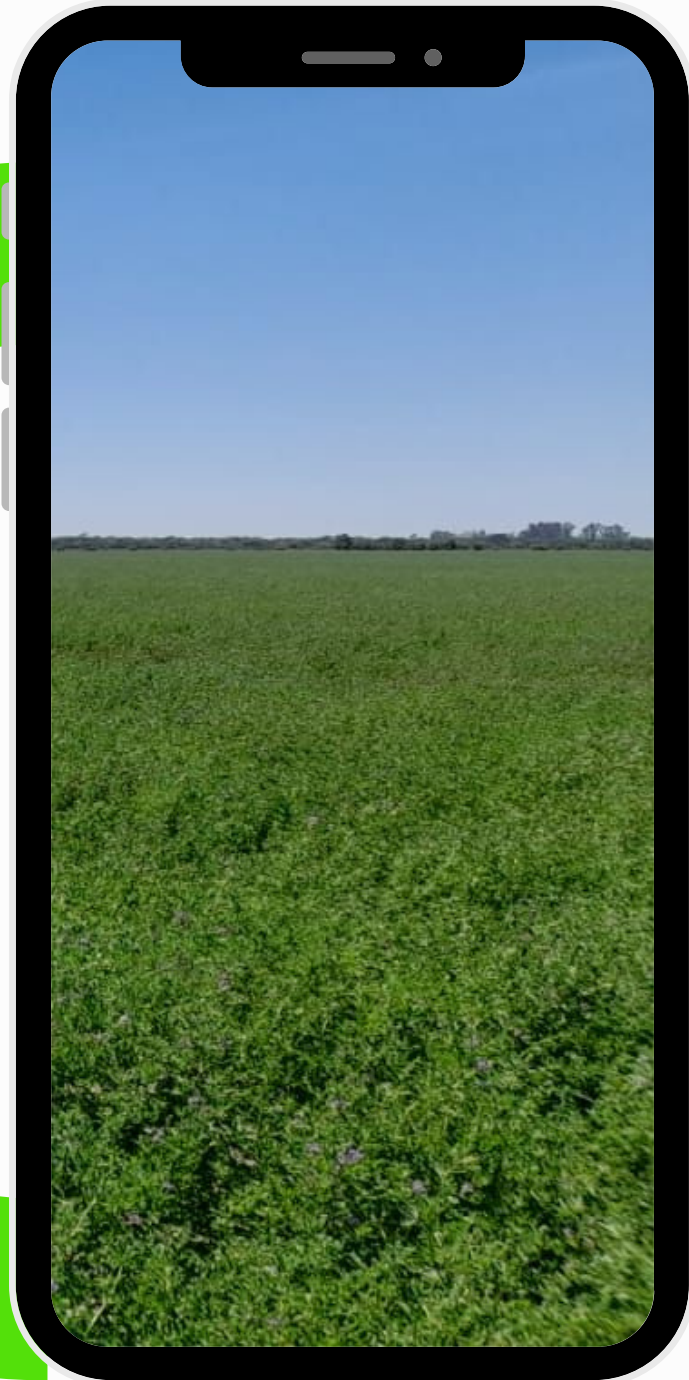
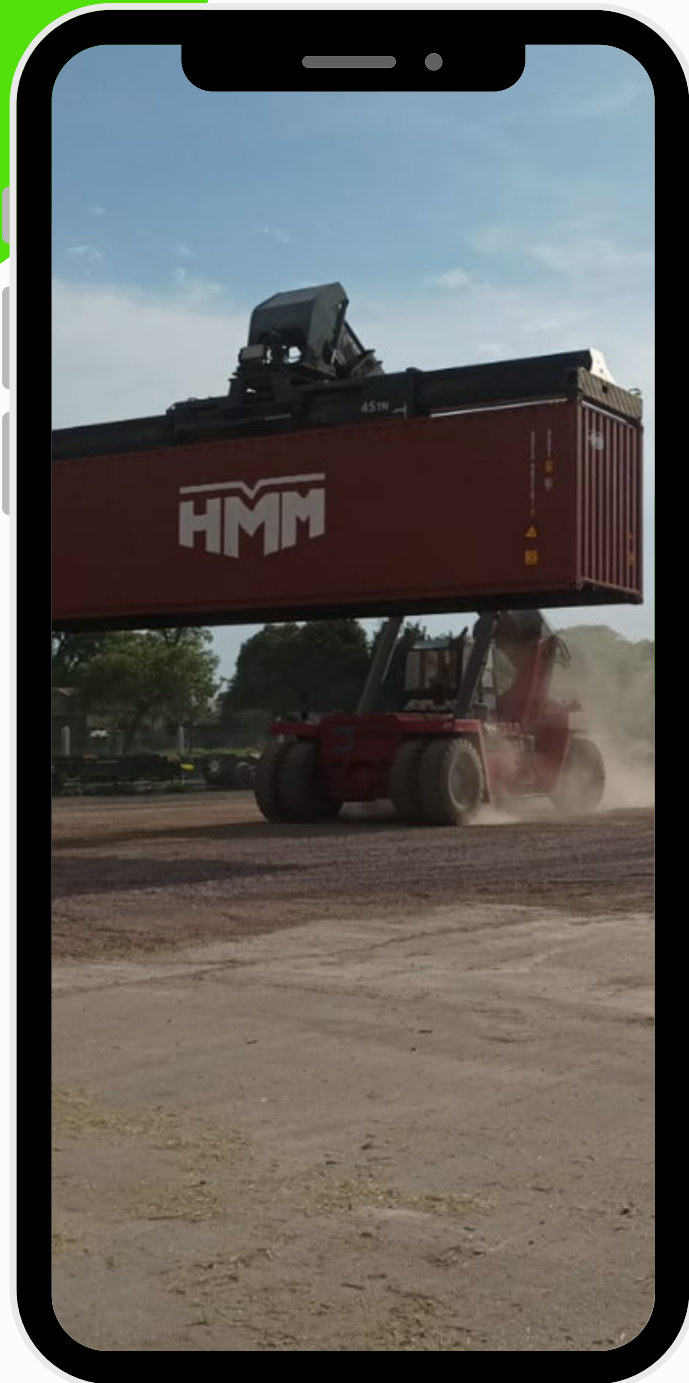


# OUR COPROMISE

**As we work with products that grow in our land we are required to do it with our planet in mind, that's the reason why we work hard to become the only alfalfa foreign company that ensures the lowest carbon footprint doing the whole production and logistics process.**







# KEEP IN TOUCH

**@cadafsa**

---

**info@cadafsa.com**

---

**www.cadafsa.com**

---

**+54 3564 - 595320**

---

# STRATEGIC AGREEMENTS

