



Welcome to
QM EQUIPMENT
Catalogue 2020

Oil & Gas
Equipment

EPC
Projects

Cryogenic

Renewable
Energy

Parts &
Service

Services



www.qm-equipment.com
info@qm-equipment.com

Argentina - USA



About us



QM develops technological, efficient and innovative solutions, maintaining high quality standards at international prices. We make long-term investments to contribute to the development of the energy sector. We are located in the Industrial Park of Mar del Plata, only 15 km from the Port.

We are pioneers in the design and development of well service equipment and we became the leading company in Argentina for the provision of fracture, cementing and stimulation equipment. We also specialize in the design and manufacture of equipment for the transport of cryogenic products, API 650 tanks, offshore containers following D.N.V specifications and pressure vessels. In this last business unit we have certified ASME VIII div 1. U and R stamp.

We are a team of 240 people. We have a Integrated Management System certified under ISO 9001:2015, ISO 14001:2015 and OHSAS 18001:2007 to design, build and market industrial equipment. In addition, we have certification from the American Society of Mechanical Engineers (ASME) to design, build, repair and certify pressure vessels according to the ASME Code Section VIII Division 1.

We grew quickly thanks to our enthusiasm and commitment to face new challenges. We are a flexible company with the ability to adapt to the requirements of each of our clients as well as the evolution of the energy market.

Our Team



We are a team with the capacity, passion and creativity to face new challenges and solve properly the requirements of our clients. The objective of QM is personal and professional development, to motivate them to fulfill their goals and desires.

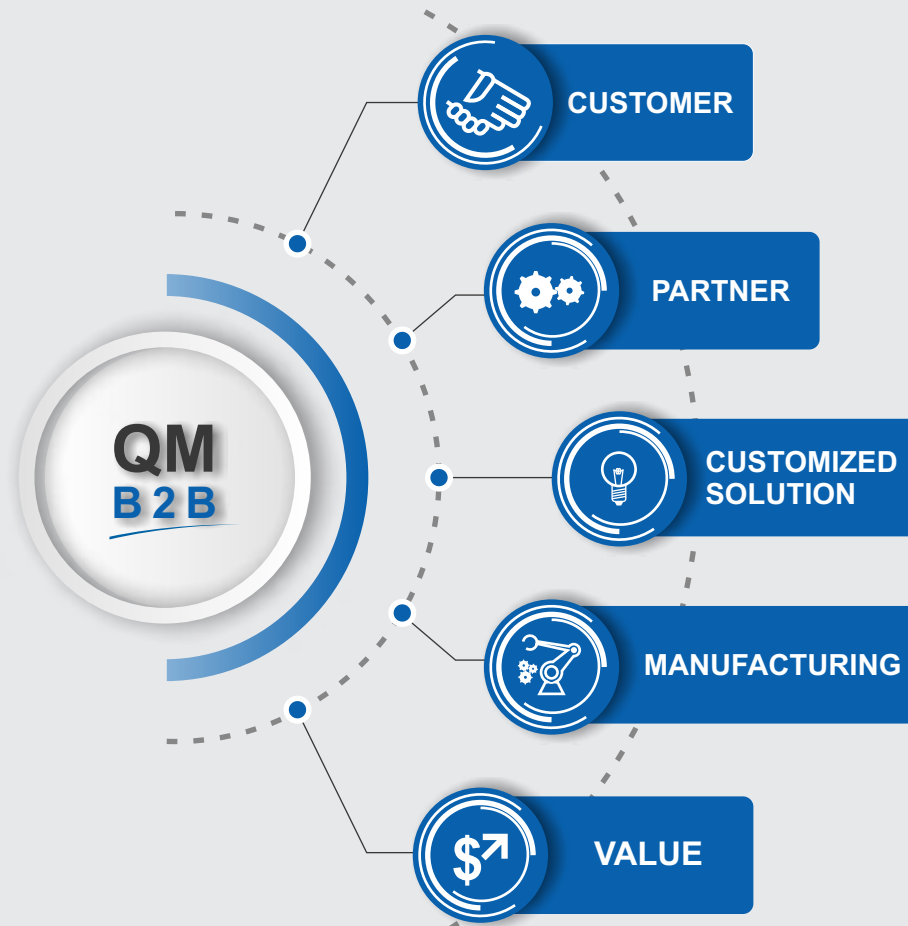
- **40 Professionals**
- **200 Specialists**
- **Training programs**
- **Career plans**
- **Qualified welders**
- **Certified welding inspectors**



Our Business



Our main business is to provide customized solutions to our customers that add value to their businesses.



Where we are



Houston **QME USA**

9126 Thomasville Dr,
Houston, Texas, EE. UU.
Star Up & Test
Maintenance
After Sales Service

Neuquén **SQM**

Ruta N°7, km 13,5 - Centenario,
Neuquén, Argentina.

[Vaca muerta area]

Official **WEIR** Service Center
Pump repair
High pressure certification service
Permanent stock of spare parts
Safety slings - FSR system
Special hoses
Equipment rental

Mar del Plata **QM Equipment**

Calle 1 entre 2 y 4, Parque Industrial,
Mar del Plata, Buenos Aires, Argentina.
Design and Construction of Pressure
Vessel (ASME).
International Trailer Fabrication Brand Qme.
Design and Construction of Cryogenic
Equipment.
Design and Construction of Hydraulic
Equipment.
Applied Software development.
Welding under ASME/AWS/API specifications.
Structural Analysis and Design with Finite
Element Model (FEM).
DNV 2.7.1, ATX, ADR, IMDG,
US DOT, API, UL and other certifications.

Main Destinations



LATIN AMERICA

- Bolivia
- Brazil
- Colombia
- Chile
- Ecuador
- Peru
- Uruguay
- Venezuela

NORTH AMERICA

- Alaska
- Lower 48
- Mexico
- USA

MIDDLE EAST

- Egypt
- Oman
- Saudi Arabia

EASTERN EUROPE

- Russia

Our Factory



**32 Overhead cranes up to 80 Tons
of lifting capacity
31.000 M2 [333.680 SqFt]**



Our Factory



Our Capabilities



Welding Equipment

95 GMAW / FCAW process equipment
Invertec multi-process welder features the Surface Tension Transfer (STT) process for GMAW-STT welding
SMAW welding process
GTAW welding process with water cooling
SAW welding process
Welding column with horizontal and vertical movement
Bench for welding beams by SAW process

Thermal cutting

CNC Pantograph
Plasma
Cutting and Oxycutting

Cutting and Bending

CNC guillotine
CNC Bending Machine
Roller
Beveling machine
Punching machine
Band Saws

Machining

Parallel lathe
Double drill



Our Capabilities



Hydraulic shop

Hose crimping machine
Hydraulic hose cutter machine
Hydraulic hose test bench
Flushing bench
Online particle meter



Electricity Shop

Electronics laboratory

Painting shop

Blasting Booth
Two Air-conditioned paint booths

Our Capabilities



Movements & lifting equipment

Scania truck with Palfinger crane

Ford Cargo truck

Semi-trailers for general cargo

Carts for movement of special loads

2 axles chassis

2 axles dolly

Crane 60 ton

Fork lift up to 4,5ton

Skid Steer Loader Caterpillar 246C

Genie Z-45/25 J articulated lifting platform

Telehandler

Power Generators



Our Capabilities



Testing Bay

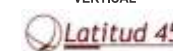
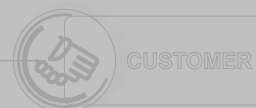
Up to 5,000 HP.
Up to 140 BPM.
Up to 15,000 PSI.
Instrumentation system.
Data acquisition
Remote control and recording.

Our Customers



- AESA
- APR ENERGY
- BAKER HUGHES
- CALFRAC WELL SERVICE
- CCA - CENTRALES DE LA COSTA ATLÁNTICA S.A.
- DLS
- ECOSTIM
- ENAP
- FLUENCE
- GEOPATAGONIA
- HALLIBURTON
- HERRENKNECHT VERTICAL
- LATITUD 45
- MARBAR
- NABORS
- NOV - NATIONAL OILWELL BARCO
- PAE PAN AMERICAN ENERGY
- PLUSPETROL

- PROENERGY
- SAN ANTONIO
- SCHLUMBERGER
- SUPERIOR ENERGY SERVICES
- SIEMENS
- TECPETROL
- WEATHERFORD
- YPF





- ALLISON
- TRANSMISSION
- CAT
- CUMMINS
- DRESSER-RAND
- GUASCOR
- JENBACHER
- LIEBHERR

- MTU
- TWIN DISC
- WAUKESHA
- WEIR
- ZF



PARTNER



PARTNER



Our Certifications



CERTIFICATE OF AUTHORIZATION

The named company is authorized by the American Society of Mechanical Engineers (ASME) for the scope of activity shown below in accordance with the applicable rules of the ASME Boiler and Pressure Vessel Code. The use of the certification mark and the authority granted by this Certificate of Authorization are subject to the provisions of the agreement set forth in the application. Any construction stamped with this certification mark shall have been built strictly in accordance with the provisions of the ASME Boiler and Pressure Vessel Code.

COMPANY:

QME Equipment, S.A.
Parque Industrial Gral. Manuel Savio
Calle 1 entre 2 y 4
Mar del Plata, Buenos Aires 7601
Argentina



USDOT Number: 2181151
CT Number: 12454
Cargo Tank PIN: 2X96WP2I
USDOT PIN: 9E22SU9H



THE NATIONAL BOARD OF BOILER & PRESSURE VESSEL INSPECTORS Certificate of Authorization



This is to certify that
QME Equipment, S.A.
Parque Industrial Gral. Manuel Savio
Calle 1 entre 2 y 4
Mar del Plata, Buenos Aires 7601
Argentina



CERTIFICATIONS

- Certification ISO 9001:2015, ISO 14001:2015 y
- OHSAS 180001:2007
- International certification as manufacturers of semi-trailers
- DOT certification to commercialize trailers authorized to circulate in the United States
- ASME Sección VIII Division 1
- Stamp R that allows us to repair pressurized vessels
- API Q1 in certification process

Business Units



Oil & Gas Equipment

Fracturing & Well Stimulation
Cementing & Pumping
Coiled Tubing & Well intervention
Control systems & Software
Drilling & Workover
Well Testing

EPC Projects

Early Production Facilities
Water treatment plants
Gas treatment plants
Gas compression
Power plants
Cement plants
API 650 Tanks
Overhead cranes

Cryogenic

LNG

Nitrogen
Oxygen
Industrial Gases

Renewable Energy

Wave Energy

Wind Power

Solar Energy

Parts & Service

WEIR SPM
Complete Product Line

Pumps
Instrumentation &
Control

Hydraulic components

Services

Maintenance

Rebuilding

Revamping

Inspections

Certifications

Oil & Gas Equipment

**Fracturing &
Well Stimulation**

**Cementing &
Pumping**

**Coiled Tubing &
Well intervention**

**Control systems &
Software**

Drilling & Workover

Well Testing

Oil & Gas Equipment



**FRAC
PUMPS
2250 HP
2500 HP**

**HEAVY DUTY
ENGINEERING**

Trailer

- Length: 52' [15,860]
- Width: 8'6" [2,584]
- Height: 13'6" [4,100]

Engines

- CAT
- CUMMINS
- LIEBHERR
- MTU

Power Transmission

- ALLISON
- CAT
- TWIN DISC
- ZF

Cooling System

- GHT Cube Style radiator
- Customer Standard

High Pressure Pump

- Weir SPM
- Customer Standard

Control System

- QM System
- Customer Standard

Custom Configuration

We configure the unit according to your needs

Oil & Gas Equipment



**FRAC
PUMPS
2250 HP
2500 HP**

**HEAVY DUTY
ENGINEERING**

Trailer

- Length: 52' [15,860]
- Width: 8'6" [2,584]
- Height: 13'6" [4,100]

Engines

- CAT
- CUMMINS
- LIEBHERR
- MTU

Power Transmission

- ALLISON
- CAT
- TWIN DISC
- ZF

Cooling System

- GHT Cube Style radiator
- Customer Standard

High Pressure Pump

- Weir SPM
- Customer Standard

Control System

- QM System
- Customer Standard

Custom Configuration

We configure the unit according to your needs

Oil & Gas Equipment



**FRAC
PUMPS
2250 HP
2500 HP**

**HEAVY DUTY
ENGINEERING**

Trailer

- Length: 52' [15,860]
- Width: 8'6" [2,584]
- Height: 13'6" [4,100]

Engines

- CAT
- CUMMINS
- LIEBHERR
- MTU

Power Transmission

- ALLISON
- CAT
- TWIN DISC
- ZF

Cooling System

- GHT Cube Style radiator
- Customer Standard

High Pressure Pump

- Weir SPM
- Customer Standard

Control System

- QM System
- Customer Standard

Custom Configuration

We configure the unit according to your needs

Oil & Gas Equipment



**FRAC
PUMPS
2250 HP
2500 HP**

**HEAVY DUTY
ENGINEERING**

Trailer

- Length: 52' [15,860]
- Width: 8'6" [2,584]
- Height: 13'6" [4,100]

Engines

- CAT
- CUMMINS
- LIEBHERR
- MTU

Power Transmission

- ALLISON
- CAT
- TWIN DISC
- ZF

Cooling System

- GHT Cube Style radiator
- Customer Standard

High Pressure Pump

- Weir SPM
- Customer Standard

Control System

- QM System
- Customer Standard

Custom Configuration

We configure the unit according to your needs

Oil & Gas Equipment



Frac pump 2500 HP

**FRAC
PUMPS
2250 HP
2500 HP**

**HEAVY DUTY
ENGINEERING**

Trailer

- Length: 52' [15,860]
- Width: 8'6" [2,584]
- Height: 13'6" [4,100]

Engines

- CAT
- CUMMINS
- LIEBHERR
- MTU

Power Transmission

- ALLISON
- CAT
- TWIN DISC
- ZF

Cooling System

- GHT Cube Style radiator
- Customer Standard

High Pressure Pump

- Weir SPM
- Customer Standard

Control System

- QM System
- Customer Standard

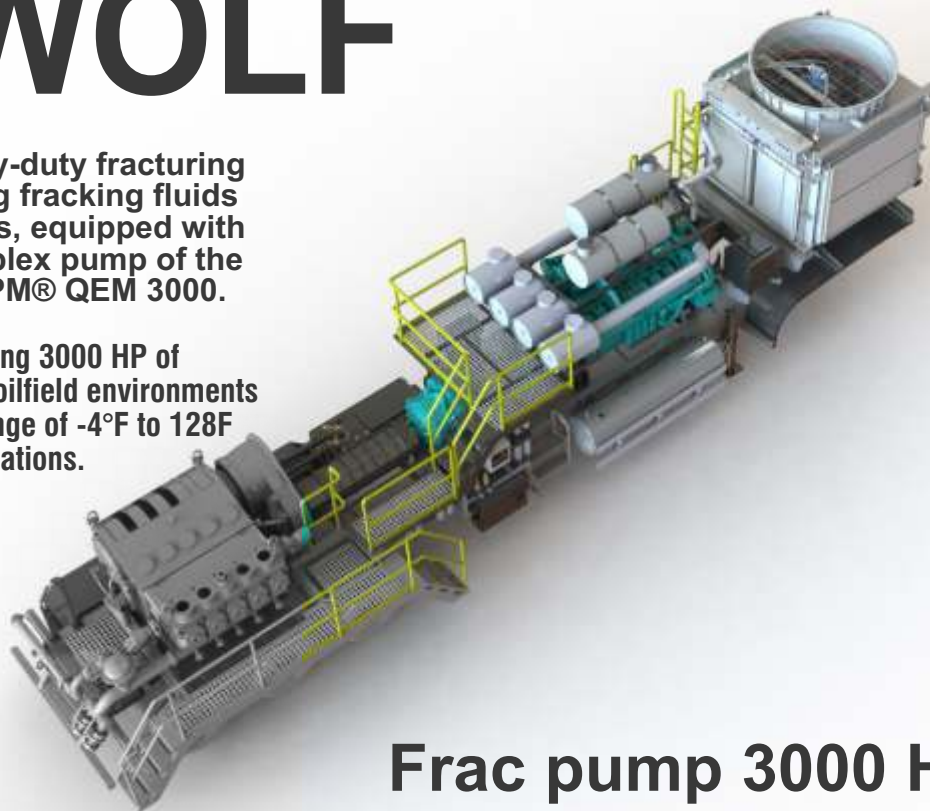
Custom Configuration

We configure the unit according to your needs

SEAWOLF

The SEAWOLF is a Heavy-duty fracturing unit designed to pumping fracking fluids for non-conventional jobs, equipped with the best 3000 HP Quintuplex pump of the market, the new WEIR SPM® QEM 3000.

This unit is capable of delivering 3000 HP of Power continuously on harsh oilfield environments in an ambient temperature range of -4°F to 128°F during very large current operations.



Frac pump 3000 HP

**FRAC
PUMP
SEAWOLF
3000 HP**

**HEAVY DUTY
ENGINEERING**

Trailer

- Length: 52' [15,860]
- Width: 8'6" [2,584]
- Height: 14'1" [4,300]

Engines

- MTU 16V4000T95 Tier IV Final
- QSK 60 Tier II Final
- CAT 3516C HD Tier II

Power Transmission

- Twin Disc TA908502
- CAT TH55 E70
- ALISON 9832 OFS

Cooling System

- GHT Cube Style radiator
- Customer Standard

High Pressure Pump

- Weir SPM
- Customer Standard

Control System

- QM System
- Customer Standard

Custom Configuration

We configure the unit according to yours needs

Oil & Gas Equipment



Blender 60 BPM

**BLENDER
60 BPM
120 BPM
140 BPM**

**HEAVY DUTY
ENGINEERING**

Trailer

- Length: 51' [15,750]
- Width: 8'6" [2,584]
- Height: 13'6" [4,100]

Engines

- CAT
- CUMMINS
- LIEBHERR
- MTU

Pump Drive

- FUNK
- DURST

Sand system

- Two sand screws 45° / 60°
- Three sand screws 45° / 60°
- Customer Standard

Control System

- QM System
- Customer Standard

Custom Configuration

We configure the unit according to your needs

Oil & Gas Equipment



Blender 60 BPM

**BLENDER
60 BPM
120 BPM
140 BPM**

**HEAVY DUTY
ENGINEERING**

Trailer

- Length: 51' [15,750]
- Width: 8'6" [2,584]
- Height: 13'6" [4,100]

Engines

- CAT
- CUMMINS
- LIEBHERR
- MTU

Pump Drive

- FUNK
- DURST

Sand system

- Two sand screws 45° / 60°
- Three sand screws 45° / 60°
- Customer Standard

Control System

- QM System
- Customer Standard

Custom Configuration

We configure the unit according to your needs

Oil & Gas Equipment



Blender 120 BPM

**BLENDER
60 BPM
120 BPM
140 BPM**

**HEAVY DUTY
ENGINEERING**

Trailer

- Length: 51' [15,750]
- Width: 8'6" [2,584]
- Height: 13'6" [4,100]

Engines

- CAT
- CUMMINS
- LIEBHERR
- MTU

Pump Drive

- FUNK
- DURST

Sand system

- Two sand screws 45° / 60°
- Three sand screws 45° / 60°
- Customer Standard

Control System

- QM System
- Customer Standard

Custom Configuration

We configure the unit according to your needs

Oil & Gas Equipment



Hydration Unit 100 BPM

**HYDRATION
UNIT
Up to
120 BPM**

**HEAVY DUTY
ENGINEERING**

Trailer

- Length: 51' [15,750]
- Width: 8'6" [2,584]
- Height: 13'6" [4,100]

Engines

- CAT
- CUMMINS
- LIEBHERR
- MTU

Pump Drive

- FUNK
- DURST

Process system

- 200 BBL tank
- 6 L.A.S.
- Optional DRY system + 4 L.A.S
- Single or double C-pump

Control System

- QM System
- Customer Standard

Custom Configuration

We configure the unit according to your needs

Oil & Gas Equipment



Hydration Unit 100 BPM

**HYDRATION
UNIT
Up to
120 BPM**

**HEAVY DUTY
ENGINEERING**

Trailer

- Length: 51' [15,750]
- Width: 8'6" [2,584]
- Height: 13'6" [4,100]

Engines

- CAT
- CUMMINS
- LIEBHERR
- MTU

Pump Drive

- FUNK
- DURST

Process system

- 200 BBL tank
- 6 L.A.S.
- Optional DRY system + 4 L.A.S
- Single or double C-pump

Control System

- QM System
- Customer Standard

Custom Configuration

We configure the unit according to yours needs

Oil & Gas Equipment



Mini Hydration Unit 60 BPM

**HYDRATION
UNIT
Up to
120 BPM**

**HEAVY DUTY
ENGINEERING**

Trailer

- Length: 33' [10,000]
- Width: 8'6" [2,584]
- Height: 13'6" [4,100]

Engines

- CAT
- CUMMINS
- LIEBHERR
- MTU

Pump Drive

- FUNK
- DURST

Process system

- 200 BBL tank
- 6 L.A.S.
- Optional DRY system + 4 L.A.S
- Single or double C-pump

Control System

- QM System
- Customer Standard

Custom Configuration

We configure the unit according to yours needs

Oil & Gas Equipment



L.A.S UNIT

**HEAVY DUTY
ENGINEERING**

Trailer

- Length: 48' [14,540]
- Width: 8'6" [2,584]
- Height: 13'6" [4,100]

Engines

- CAT
- CUMMINS
- LIEBHERR
- MTU

Pump Drive

- FUNK
- DURST

Process system

- 10 L.A.S.
- 10 Hose reels
- 10 Tote tanks 350 Gal

Control System

- QM System
- Customer Standard

Custom Configuration

We configure the unit according to your needs

Oil & Gas Equipment



**L.A.S
SUPER
PUMP**

**HEAVY DUTY
ENGINEERING**

Trailer

- Length: 48' [14,540]
- Width: 8'6" [2,584]
- Height: 13'6" [4,100]

Engines

- CAT
- CUMMINS
- LIEBHERR
- MTU

Pump Drive

- FUNK
- DURST

Process system

- 4 L.A.S.
- 4 Hose reels
- Main tank
- C-PUMP

Control System

- QM System
- Customer Standard

Custom Configuration

We configure the unit according to your needs

Oil & Gas Equipment



**Manifold
trailer**

Trailer

- Length: 51' [15,700]
- Width: 8'6" [2,584]
- Height: 6'9" [2,100]

Low & High pressure line

- 2 independent interconnectables
- 4" hammer unions end connections
- Anti vibratory in high pressure line

Custom Configuration

We configure the unit according to your needs

**HEAVY DUTY
ENGINEERING**

Oil & Gas Equipment

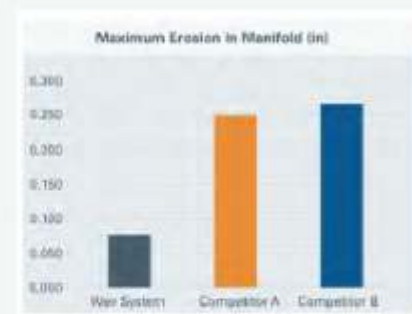
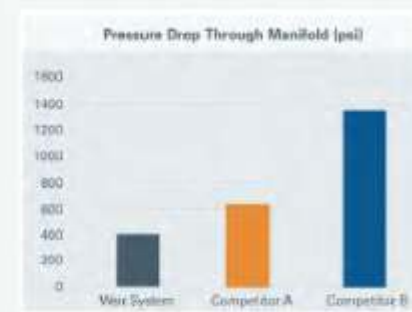


SIMPLIFIED FRAC IRON SYSTEM 18 STATION



Prior to operation, a Computational Fluid Dynamics (CFD) analysis was conducted to predict equipment erosion. It revealed the following:

- WEIR's linear design predicted approximately 70% less wear and 900 psi less pressure drop than similar systems.
- Estimated erosion of the 5" tie-in pipeline would only be 0.003" during the single-well frac.
- Estimated erosion of the 7" trunk line would only be 0.004" throughout the entire five-well frac.
- Estimated erosion of the 7" cross in the trunk line was only 0.039".
- Less horsepower would be required to drive the pumps, ensuring that pressure measured at the surface would reflect what was delivered to the formation.
- During a maintenance shutdown, an additional Ultrasonic Thickness Survey (UTS) indicated very little erosion on any of the components—approximately 12 percent of allowable limits.



Oil & Gas Equipment



SIMPLIFIED FRAC IRON SYSTEM 18 STATION

Frac Truck Docking Port to replace Missile Trailer:

- Demonstrating under 2 hour rig up time (place, connect, torque)
- Currently at over 500 stages – >230M lbs of sand
- After 95M lbs of sand, visual inspection shows minimal signs of wear
- Drastically reduced vibration from the truck through the wellhead

Features:

- Modular Design
- One Suction Skid, Low Pressure
- Three Manifold Skid, 6-Station
- One Instrumentation Skid
- One Goat Head 6 Way 3" 1502F connections
- Extension of the inspection time, from 6 months to 1 year in the 7" pipe

Oil & Gas Equipment



**Manifold
trailer**

Trailer

- Length: 40' [12,200]
- Width: 8'6" [2,584]
- Height: 5' [1,500]

Low & High pressure line

- 2 independent interconnectables
- 4" hammer unions end connections
- Anti vibratory in high pressure line

Custom Configuration

We configure the unit according to yours needs

**HEAVY DUTY
ENGINEERING**

Oil & Gas Equipment



Sand chief 3000 CuFt

**SAND
CHIEF
3000 CuFt
4000 CuFt**

**HEAVY DUTY
ENGINEERING**

Trailer

- Length: 54' [16,400]
- Width: 8'6" [2,584]
- Height: 13'6" [4,100]

Engines

- CAT
- CUMMINS

Pump Drive

- FUNK
- DURST

Process system

- Conveyor belt type V with side wall
- 5 M3/Min
- 50 Tn. Joyce Dadyton legs support

Control System

- Manual
- Remote

Custom Configuration

We configure the unit according to yours needs

Oil & Gas Equipment



Sand chief 4000 CuFt

**SAND
CHIEF
3000 CuFt
4000 CuFt**

**HEAVY DUTY
ENGINEERING**

Trailer

- Length: 60' [18,500]
- Width: 11' [3,360]
- Height: 14' [4,300]

Engines

- CAT
- CUMMINS

Pump Drive

- FUNK
- DURST

Process system

- Conveyor belt type V with side wall
- 5 M3/Min
- 75 Tn. Joyce Dadyton legs support

Control System

- Manual
- Remote
-

Custom Configuration

We configure the unit according to your needs

Oil & Gas Equipment



Sand chief 4000 CuFt

**SAND
CHIEF
3000 CuFt
4000 CuFt**

**HEAVY DUTY
ENGINEERING**

Trailer

- Length: 60' [18,500]
- Width: 11' [3,360]
- Height: 14' [4,300]

Engines

- CAT
- CUMMINS

Pump Drive

- FUNK
- DURST

Process system

- Conveyor belt type V with side wall
- 5 M3/Min
- 75 Tn. Joyce Dadyton legs support

Control System

- Manual
- Remote
-

Custom Configuration

We configure the unit according to yours needs

Oil & Gas Equipment



SAND EQUIPMENT

HEAVY DUTY ENGINEERING

- Multisander up to 9 Sand Chief Max
- Sand conveyor
- Sand dump



Oil & Gas Equipment



**FRAC
TANKS
500 BBL**



Oil & Gas Equipment



Bulk Cementer 570 CuFt

**BULK
CEMENTER
570 CuFt**

**600 CuFt
700 CuFt
1410 CuFt**

Trailer

- Length: 38' [11,575]
- Width: 8'6" [2,584]
- Height: 12' [3,650]

Engines

- DEUTZ
- CAT
- CUMMINS

COMPRESSOR

- BETICO
- GD

Process system

- TWO MAIN TANKS - ASME VIII D1 ED. 2015
- MAWP = 207 kPa (30 PSI) at 100°C / MDMT = -8°C

Custom Configuration

We configure the unit according to your needs

Oil & Gas Equipment



Bulk Cementer 600 CuFt

**BULK
CEMENTER
570 CuFt**

**600 CuFt
700 CuFt
1410 CuFt**

Trailer

- Length: 38' [11,575]
- Width: 8'6" [2,584]
- Height: 12' [3,650]

Engines

- DEUTZ
- CAT
- CUMMINS

COMPRESSOR

- BETICO
- GD

Process system

- TWO MAIN TANKS - ASME VIII D1 ED. 2015
- MAWP = 207 kPa (30 PSI) at 100°C / MDMT = -8°C

Custom Configuration

We configure the unit according to your needs

Oil & Gas Equipment



Bulk Cementer 700 CuFt

**BULK
CEMENTER
570 CuFt**

**600 CuFt
700 CuFt
1410 CuFt**

Trailer

- Length: 38' [11,575]
- Width: 8'6" [2,584]
- Height: 12' [3,650]

Engines

- DEUTZ
- CAT
- CUMMINS

COMPRESSOR

- BETICO
- GD

Process system

- TWO MAIN TANKS - ASME VIII D1 ED. 2015
- MAWP = 207 kPa (30 PSI) at 100°C / MDMT = -8°C

Custom Configuration

We configure the unit according to your needs

Oil & Gas Equipment



Bulk Cementer 1500 CuFt

**BULK
CEMENTER
570 CuFt**

**600 CuFt
700 CuFt
1410 CuFt**

Trailer

- Length: 38' [11,575]
- Width: 8'6" [2,584]
- Height: 12' [3,650]

Engines

- DEUTZ
- CAT
- CUMMINS

COMPRESSOR

- BETICO
- GD

Process system

- TWO MAIN TANKS - ASME VIII D1 ED. 2015
- MAWP = 207 kPa (30 PSI) at 100°C / MDMT = -8°C

Custom Configuration

We configure the unit according to your needs

Oil & Gas Equipment



**BATCH
MIXER
100 BBL**

**HEAVY DUTY
ENGINEERING**

Trailer

- Length: 45' [13,750]
- Width: 8'6" [2,584]
- Height: 13'6" [4,100]

Engines

- CAT
- CUMMINS

Pump Drive

- FUNK
- DURST

Process system

- TWO PROCESS TANKS - 50 BBL
- ONE STORAGE TANK - OPTIONAL
- TWO C-PUMP FOR CEMENT
- ONE C-PUMP FOR WATER

Custom Configuration

We configure the unit according to your needs

Oil & Gas Equipment



**TWIN
CEMENT
PUMPER** **1000 HP
1200 HP**

**HEAVY DUTY
ENGINEERING**

Trailer

- Length: 45' [13,750]
- Width: 8'6" [2,584]
- Height: 13'6" [4,100]

Engines x 2

- CAT
- CUMMINS

Power Transmission x 2

- CAT
- ALLISON

Process system

- Two High Pressure Pump
- Displacement Tank
- High pressure line up 10K PSI

Control System

- QM System
- Customer Standard

Custom Configuration

We configure the unit according to yours needs

Oil & Gas Equipment



**TWIN
CEMENT
PUMPER** **1000 HP
1200 HP**

**HEAVY DUTY
ENGINEERING**

Trailer

- Length: 45' [13,750]
- Width: 8'6" [2,584]
- Height: 13'6" [4,100]

Engines x 2

- CAT
- CUMMINS

Power Transmission x 2

- CAT
- ALLISON

Process system

- Two High Pressure Pump
- Displacement Tank
- High pressure line up 10K PSI

Control System

- QM System
- Customer Standard

Custom Configuration

We configure the unit according to yours needs

Oil & Gas Equipment



**COMBO
TRAILER -
SINGLE
PUMP &**

**BULK
CEMENTER**

**HEAVY DUTY
ENGINEERING**

Trailer

- Length: 45' [13,750]
- Width: 8'6" [2,584]
- Height: 13'6" [4,100]

Engines

- CAT
- CUMMINS

Power Transmission

- CAT
- ALLISON

COMPRESSOR

- BETICO
- GD

Process system

- One tank for dry cement- ASME VIII D1 ed. 2015
- MAWP = 207 kpa (30 psi) at 100°C / mdmt = -8°C
- High Pressure Pump Displacement Tank
- High pressure line up 10K PSI

Control System

- QM System
- Customer Standard

Custom Configuration

We configure the unit according to your needs

Oil & Gas Equipment



Trailer

- Length: 77' [23,570]
- Width: 12' [3,750]
- 70 Tn. Capacity

**COILED
TUBING**

**Reel Trailer
CT 70 tn +
Dolly**

**HEAVY DUTY
ENGINEERING**

Oil & Gas Equipment



Trailer

- Length: 47' [14,400]
- Width: 8'6" [2,600]

**COILED
TUBING**

**Support
Trailer
Reel
Trailer**

**HEAVY DUTY
ENGINEERING**

EPC Projects

Early Production
Facilities

Water treatment
plants

Gas treatment
plants

Gas compression

Power plants

Cement plants

API 650 Tanks

Overhead cranes

EPC Projects



EPF

**Early
Production
Facilities**

**HEAVY DUTY
ENGINEERING**



EPC Projects



All sizes and designs
according to customer
requirements

Water
treatment
plants

HEAVY DUTY
ENGINEERING

EPC Projects



- Two & Three phase separator
- FWKO - Free water knockout
- Heaters
- Fuel gas skid

**Surface
Equipment**

**HEAVY DUTY
ENGINEERING**

EPC Projects



- Two & Three phase separator
- FWKO - Free water knockout
- Heaters
- Fuel gas skid

**Surface
Equipment**

**HEAVY DUTY
ENGINEERING**

EPC Projects



- Oil&Gas Industries
- Minery Industries
- Cement Industries

- Silos Weighing
- Cutting Bottle 70 CuFt
- Silos 300 CuFt
- Silos 600 CuFt
- Silos 750 CuFt
- Silos 950 CuFt
- Silos 1000 CuFt
- Silos 1200 CuFt
- Silos 1500 CuFt
- Silos 2000 CuFt

**Cement
Barite
Sand
plants &**

**Silos
Solutions**



EPC Projects



**Cement
Barite
Sand
plants &**

**Silos
Solutions**

- Oil&Gas Industries
- Minery Industries
- Cement Industries
- Silos Weighing
- Cutting Bottle 70 CuFt
- Silos 300 CuFt
- Silos 600 CuFt
- Silos 750 CuFt
- Silos 950 CuFt
- Silos 1000 CuFt
- Silos 1200 CuFt
- Silos 1500 CuFt
- Silos 2000 CuFt



EPC Projects



- Oil&Gas Industries
- Minery Industries
- Cement Industries

- Silos Weighing
- Cutting Bottle 70 CuFt
- Silos 300 CuFt
- Silos 600 CuFt
- Silos 750 CuFt
- Silos 950 CuFt
- Silos 1000 CuFt
- Silos 1200 CuFt
- Silos 1500 CuFt
- Silos 2000 CuFt



**Cement
Barite
Sand
plants &**

**Silos
Solutions**

EPC Projects



API 650 TANKS

- The QM Constructive method lays in the fact of hoisting the tank as it is being built. All mounting and welding process is performed on the ground offering high safety standards and quality.
- API 650 - Aboveground storage tanks, for skimmer, scrubbers, crude oil and its derivatives, butane, propane, solvents, water, etc. up to 50.000 M3 capacity.

**Cryogenic
LNG**

Nitrogen

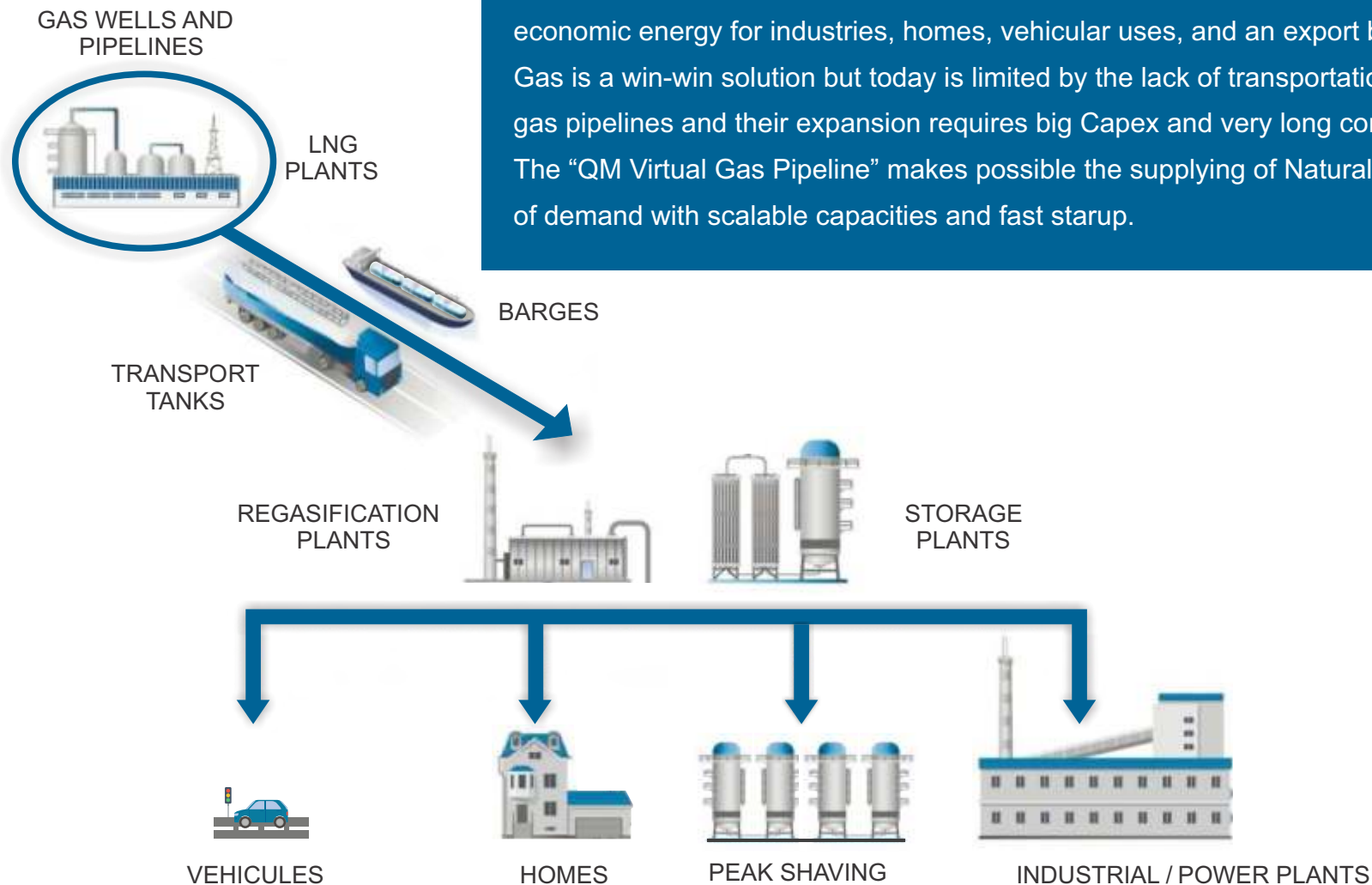
Oxygen

Industrial Gases

Cryogenic



With a demand of around 130 millions M³/D and winter peaks reaching 150 millions, Argentina owns a highly developed matrix based on Natural Gas (53% compared to 21% world average). The Natural Gas is the fuel adopted by the G20 for global energy transition for the next decades. Its increase and development allow clean and economic energy for industries, homes, vehicular uses, and an export benefit. Natural Gas is a win-win solution but today is limited by the lack of transportation capacity through gas pipelines and their expansion requires big Capex and very long construction times. The “QM Virtual Gas Pipeline” makes possible the supplying of Natural Gas to any point of demand with scalable capacities and fast startup.



Cryogenic



LNG

- EPC PROJECTS
- VAPORIZERS



Cryogenic



LNG

- STORAGE TANK



- MODULAR LIQUEFACTION PLANTS

Cryogenic



LNG

- TRANSPORT TANKS / ISO TANKS



- REFUELLING STATIONS

Business Units



Parts & Service

WEIR SPM
Complete Product Line

Pumps

**Instrumentation &
Control**

Hydraulic components

Parts & Service



WEIR Service Center
Personnel trained under WEIR SPM
procedures.

- High pressure lines Certification Services
- Fracturing and Cementation Pump Repair Service
- Sale of spare parts with permanent stock
- Special hoses
- FSR System Safety Lanyards
- RFID /AMP

WEIR - SERVICE CENTER





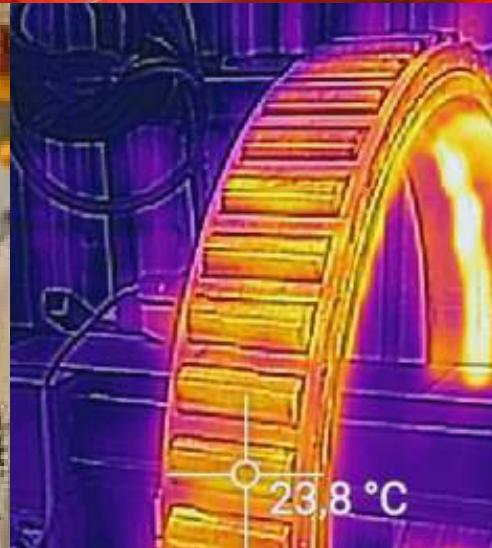
WEIR - SERVICE CENTER **WEIR**

Pump repair

Technicians trained in repairs under WEIR SPM procedures

- Permanent stock of Spare Parts
- Specific tools and tools
- Two Overhead cranes
- QM quality system, certifications:

ISO9001:2015
ISO14001:2015
OHSAS18002:2007





WEIR - SERVICE CENTER **WEIR**

Pump repair

The entire process is recorded using Asset Management Program (AMP) software, which allows online traceability of all stages of the process.



Parts & Service



WEIR - SERVICE CENTER **WEIR**

High pressure

- Plug valves
- Check valves
- Relief valves
- Choke valves
- Swivels
- Pup joints
- FSR



WEIR - SERVICE CENTER **WEIR**

Pumps

- Fracturing & Well Stimulation
- Cementing & Pumping
- Coiled Tubing & Well intervention

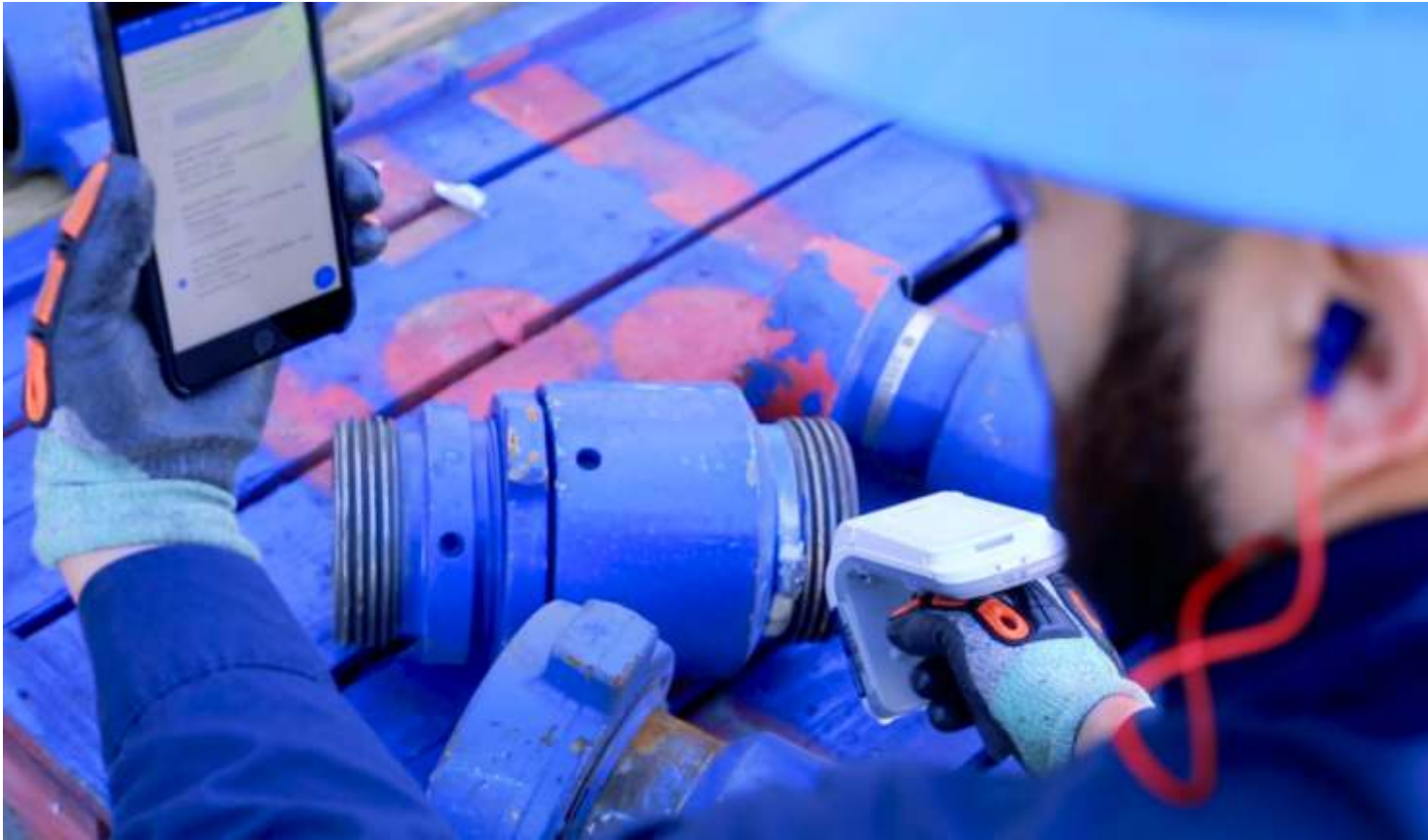




WEIR - SERVICE CENTER **WEIR**

SEABOARD

- FRAC STACK
- WELLHEAD



SPM® RFID Technology and Mobile App

- With SPM® Radio Frequency Identification (RFID) technology, your assets can be electronically tagged by serial number for safe and efficient inventory management, even when parts are difficult to access or shrink-wrapped.
- Access detailed inspection information in real-time
- Combine digital precision with mobile convenience

WEIR - SERVICE CENTER

WEIR

Manage inventory quickly, accurately, and reliably.

- Key features
- Verify asset inspection status quickly on site
- Reduce man-hours for inventory control on site or at service facility
- Minimize human error during inspection
- Update and store iron and RFID asset tag data immediately via A.M.P.
- Build database over time for predictive analytics
- Compatible with new or retrofit equipment

Parts &
Service



WEIR -
SERVICE
CENTER



RENTAL
EQUIPMENT

Business Units



SERVICES

Maintenance

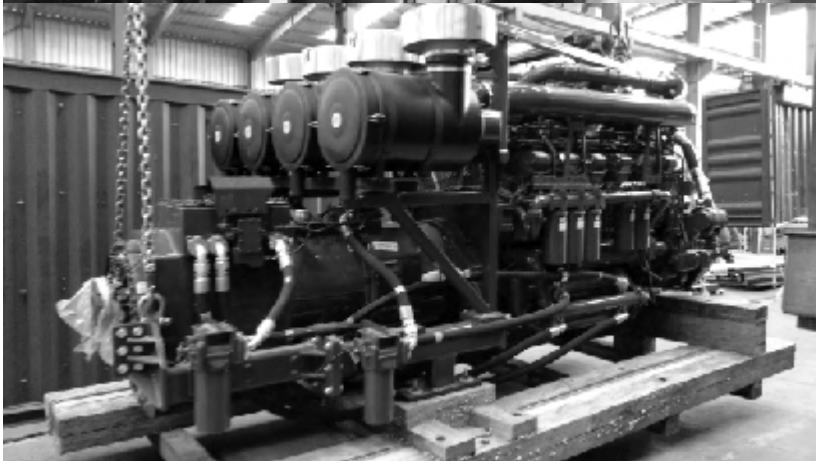
Rebuilding

Revamping

Inspections

Certifications

Services



Our capabilities allow us to maintenance, rebuildings and revampings of any kind of equipment of industry:

- Oil & Gas
- Minery
- Vial equipment
- Construction
- Agriculture
- Heavy duty Vehicules
- Defence

We perform a complete disassembly of all components and repair or replace as required. And our team of experts can complete all kinds of repairs, metalurgic, mechanical, hydraulics, electrical or electronic services.

Equipment Service & Renewal

Contact us by email or
cellphone

4.0 INDUSTRIES

Our company develops multiplatform software to monitor, visualize and analyze production processes

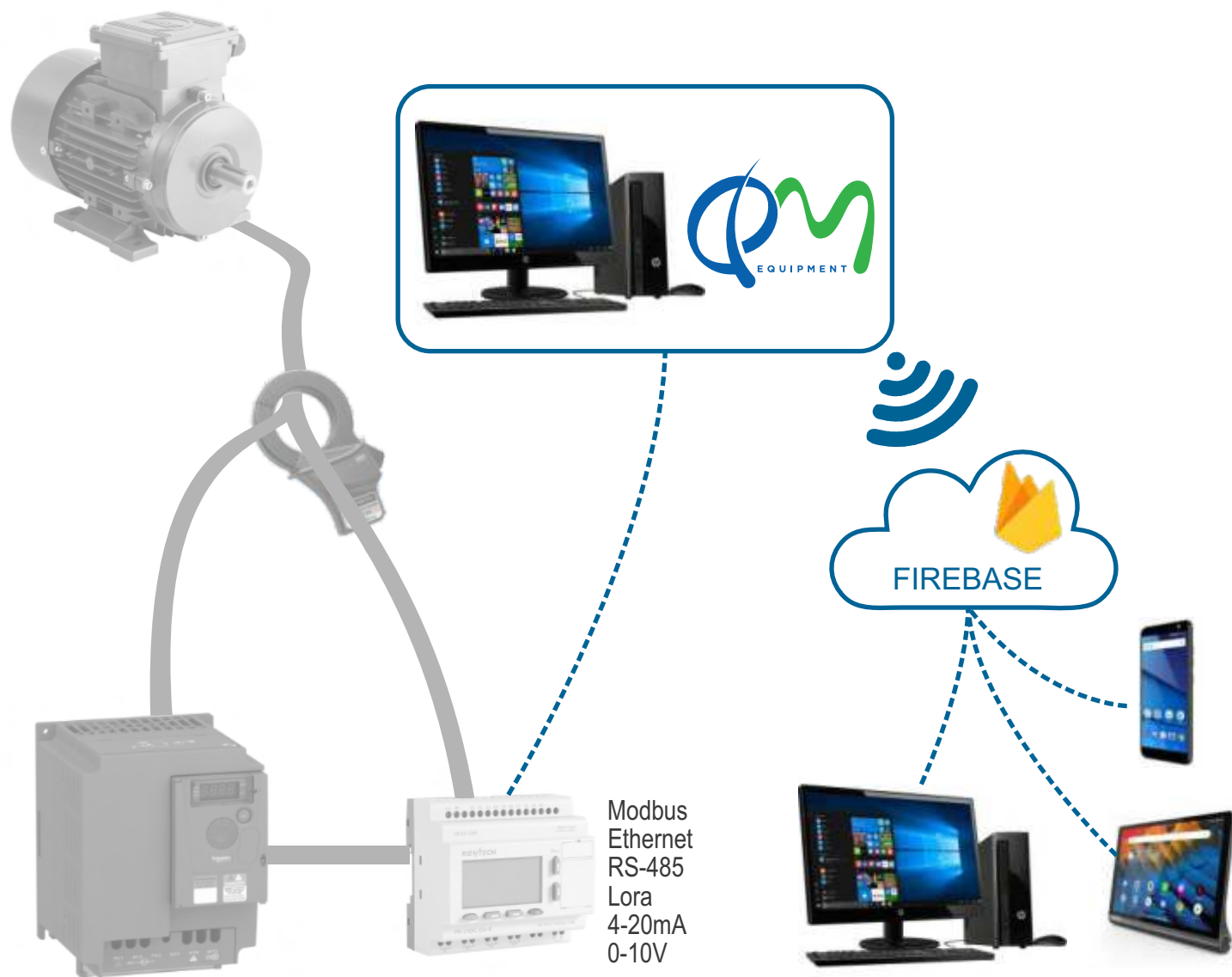
We are leaders in the instrumentation and control for the Oil & Gas equipment in Argentina

Our solutions contemplate multi-protocol acquisition and adaptable to pre-existence

Dashboards are customized according to different needs

We give counseling for the research of the variables to measure





IIOT

IIOT QM aims to integrate a versatile tool into the market, capable of managing, monitoring and analyzing production processes. It is a multiplatform tool, scalable, with adaptability to preexistence. With data acquisition, corporate analysis can be performed and data can be presented in customizable dashboard formats.

Our company has extensive experience and knowledge in the use of different types of process sensors, and provides our clients with support to find the necessary data for process management.



IIOT

The use and implementation of software increases the scope of the products and services developed

- Presents the information in an organized and compact way
- Provide data analysis tools such as charts, tables and reports
- Ease of operation and use.

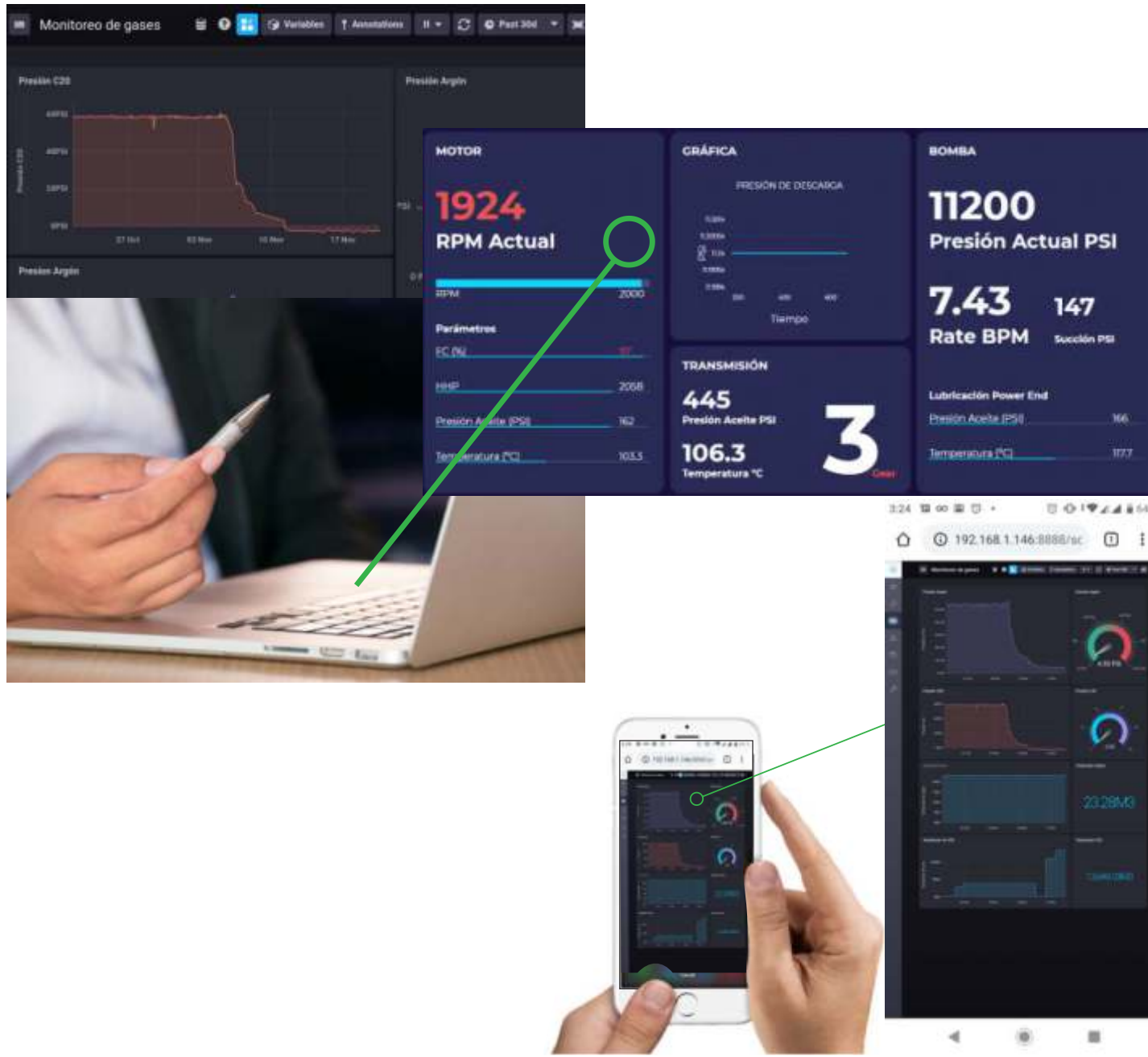
Remote System

- Real time data on cloud serveres with multiple accessibility
- Daily, monthly and annual statics
- Wifi and satellite communication capability
- Remote process control
- Centralized decision-making
- Competitive advantages in preventing manitenance and supervision
- Failure alerts

IIOT



IIOT Solutions



IIOT

Mobile applications provide simple access to the equipment data

Wireless communication advantages:

- Real time monitoring of the process at any time
- Long distance control
- Wiring reduction



Welcome and thank you for your attention

**Oil & Gas
Equipment**

**EPC
Projects**

Cryogenic

**Renewable
Energy**

**Parts &
Service**

Services



www.qm-equipment.com
info@qm-equipment.com

Argentina - USA